

# Resetting Post-Pandemic





"NWPP helped me stay stably housed during the pandemic when I lost my job and began having problems with my vision. I felt like they had my back, and I didn't have to worry."

– Billy, age 60, pictured with Tyra Washington his NWPP Case Manager

# We measure our success by the success of the people we serve: older adults with barriers to housing.

**Our Mission:** to offer opportunities for a life of dignity and hope to very low income seniors in Multnomah County by solving housing and transportation needs.

This past year was a year of fully resetting our service delivery and operations in the wake of the pandemic. Despite the disruption, we are back on track! We provided over 916 senior households with the surety of an affordable apartment, and the safety and dignity they deserve. By that measure, this year was a success! And all this is because of your support: financial, partnership, wisdom, feedback, and your valuable time.

We're excited to share highlights of our accomplishments of the past year, including our solid financial position service numbers and, of course, the seniors we serve.

Thank you for being part of NWPP's success!

Laura Golino de Lovato



2022-23

## A year of reopening and growth

This year was an exciting one for Northwest Pilot Project. The end of the pandemic allowed us to reopen our office to clients and return to working in person with each other. The joy of our first all-staff meeting around the conference table was palpable!



**Partnerships:** We partnered with Northwest Housing Alternatives, Urban League, and the Joint Office of Homeless Services to support residents displaced from the Rosemont Court Apartments following a public health emergency. With NAYA, we placed 47 households experiencing homelessness into brand-new apartments at Emmons Place (see page 8).



**Advocacy:** We advocated with local agencies and public officials to address the shortage of homecare workers for older adults needing in-home support services in order to safely age in place.

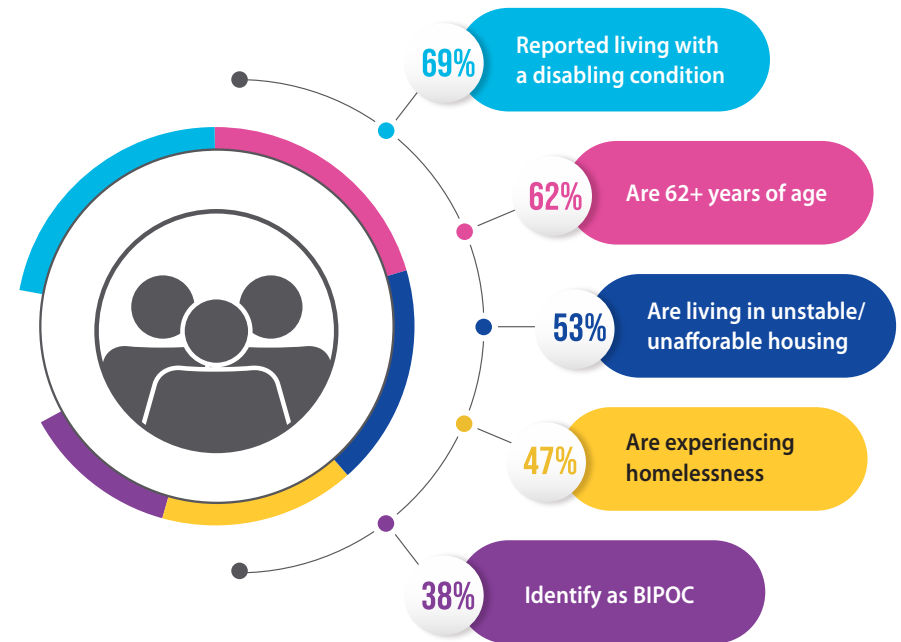


**COVID relief:** We received and quickly distributed additional rent assistance funds made available through the State of Oregon to address the economic impacts of COVID-19.



**More staff, more services:** And we added key staff members to our team this year, allowing us to provide services to more seniors, and to provide a range of services for a variety of housing needs.

## The changing demographics of our clients guide our services

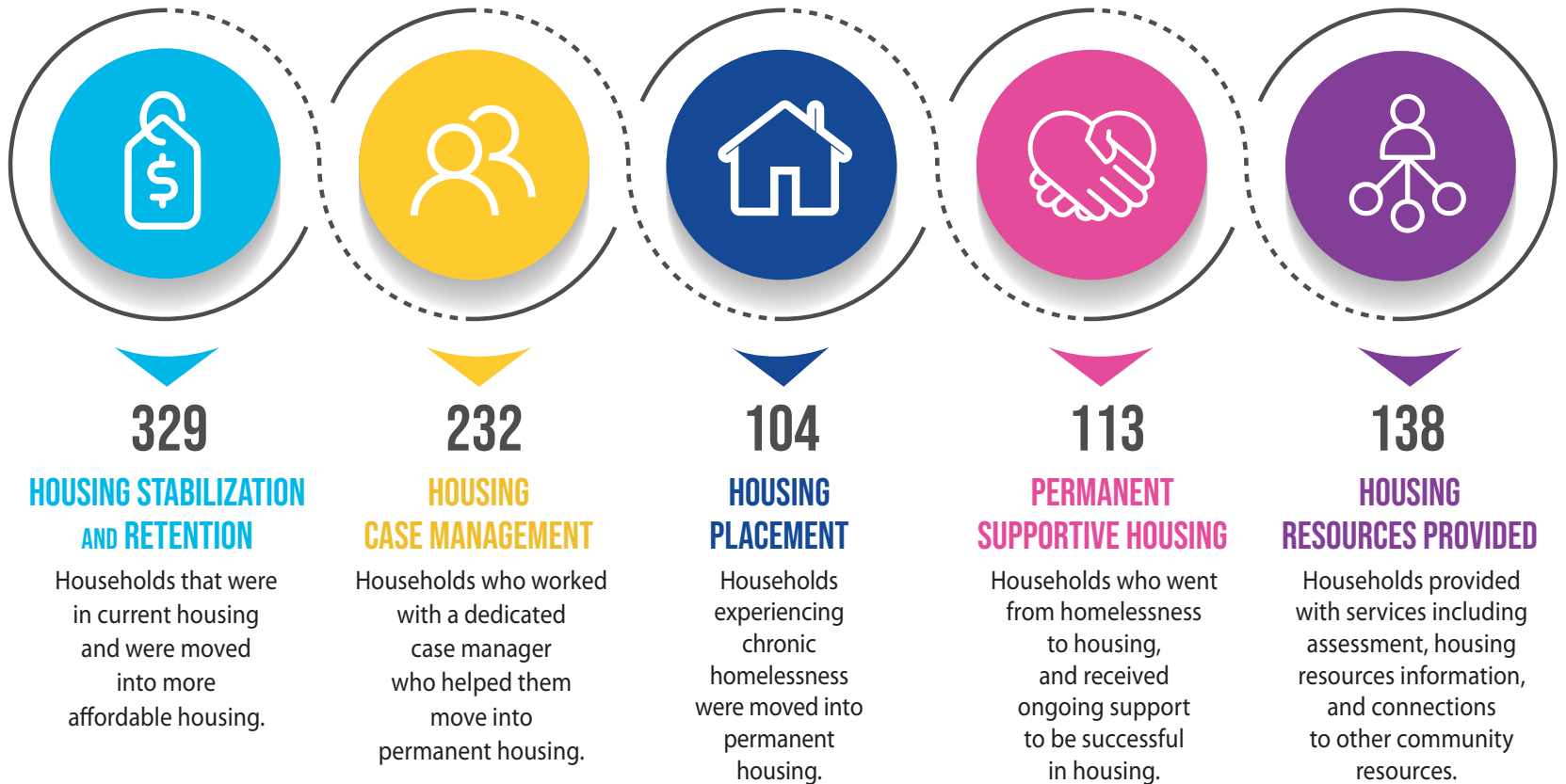


Over the last 10 years, NWPP has seen a 40 percent increase in clients age 62 or older. We've adjusted how we deliver services to better meet the needs of older adults.

# Housing Program Outcomes

Our integrated approach yielded solid results in our work to address senior homelessness in our community over the last year. Seniors come to NWPP with a myriad of housing complications and needs, so we have developed different strategies to holistically meet each individual with services tailored for them.

These numbers demonstrate the housing outcomes for seniors served by our housing team







## Housing Success at Emmons Place

At the end of May, NWPP completed the placement of 47 older adult households into Emmons Place, a brand-new affordable housing building in the heart of a centrally-located Portland neighborhood.

Named after NWPP's former executive director Susan Emmons, Emmons Place is actually a two-part development connected by the historic Buck Prager building. In 2015 a partnership between NWPP, Northwest Housing Alternatives, and the property's owner created the vision for high quality housing in a walkable neighborhood close to shopping and transit, which would provide critical, deeply-subsidized apartments for older adults at the peak of a housing crisis.



NWPP supporters provided all the basic household necessities for residents moving into their new, affordable housing. Left: Susan Emmons and Executive Director Laura Golino de Lovato in front of Emmons Place.





"Living in a shelter, it is basically impossible to sleep... being here (Emmons Place) I was able to sleep, concentrate and get my head back on track."

– James, age 57, (far right with Lila Pearman, PSH Manager, and his neighbor Tony)

The property was designated as a model Permanent Supportive Housing (PSH) project for older adults. Featuring 47 light-filled units, the south building provides subsidized studio apartments paired with services and support. PSH is an approach to housing backed by years of evidence that provides the opportunity for stable and affordable housing for those who have experienced homelessness, paired with tailored and ongoing services from housekeeping to behavioral health support.

Thanks to funding from the Supportive Housing Services measure, NWPP's PSH team worked with these soon-to-be tenants through the application process, the paperwork for the rent subsidy, and the move-in to their new home.

Our thanks to the team at the Joint Office of Homeless Services for securing additional funds to cover the cost of short-term shelter.



From left: Ella Schmidt, PSH Case Manager, resident Ron, and Marisa Bartholomew, PSH Case Manager in the NWPP office at Emmons Place



"[I] support NWPP because the work of NWPP is outstanding. NWPP has a major positive impact on an individual's life. If NWPP didn't exist, even more homeless people would be on the streets."

– NWPP Donor Vicki Schmall (left with Wendy Rudman, NWPP Executive Assistant)

## Make a difference

Your support today is critical for ensuring that NWPP can continue to provide housing placement, eviction prevention, and retention services. Make a gift of any amount using the enclosed remittance envelope or online at [www.nwpilotproject.org](http://www.nwpilotproject.org)

You can also make a difference in our clients' lives by planning ahead. There are several ways you can help: make a gift to NWPP in your will; name NWPP as a beneficiary in your life insurance policy; or create a charitable gift annuity. Find out more! Contact Laura Golino de Lovato, Executive Director at 503-478-6868 or [laurag@nwpilotproject.org](mailto:laurag@nwpilotproject.org)

## What your donation provides

- \$25  one month of a needed prescription
- \$40  application fee for an apartment
- \$100  new bedding and furniture for a senior newly placed in housing
- \$500  rent assistance to prevent the eviction of a frail senior experiencing a housing crisis
- \$1,000  application fees, deposits, moving costs for one permanent housing placement for a homeless senior



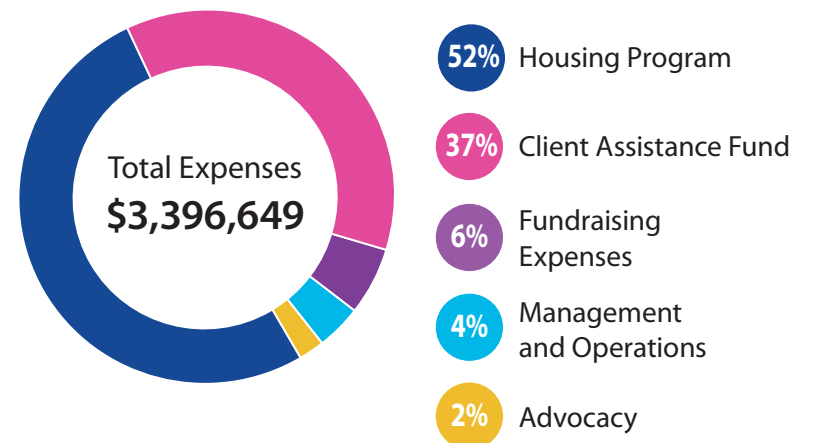
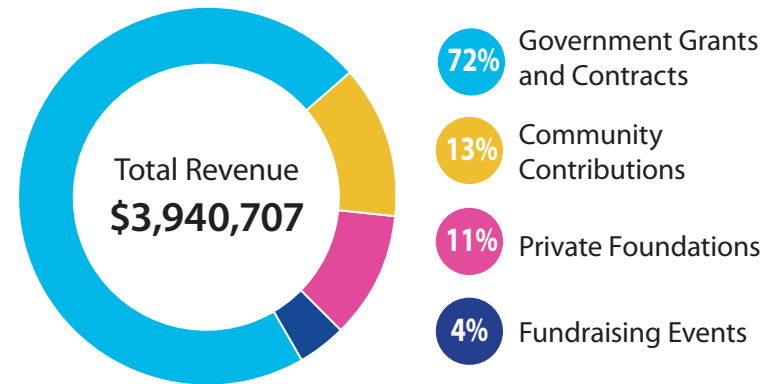


After 20 years of homelessness, Cole told us, “With housing, I am able to become steady again. ...I’m in awe of the people who work at NWPP.”

– Cole, age 61, outside his apartment with Olivia Grob, Support Service Specialist, and Marilee Koll, Case Manager

## Demonstrated Sound Fiscal Management

The financial information shown represents Northwest Pilot Project’s financial overview for the fiscal year July 1, 2022 – June 30, 2023



Full financial information available at [nwpilotproject.org/financial-information/](http://nwpilotproject.org/financial-information/)



**NORTHWEST  
PILOT PROJECT**

1430 SW Broadway  
Suite 200  
Portland, OR 97201

**HOUSING SENIORS  
CREATING HOPE  
PILOTING CHANGE**

Non-Profit Org.  
U.S. Postage  
**PAID**  
Permit No. 1729  
Portland, OR