

EXPANDING OUR REACH



“ Northwest Pilot Project has
always been there for me, in the
good times and especially in the bad times.
Their services they provide have helped a lot
and the **attention** I get from them
is very special to me. I feel very fortunate
for having found this organization ...
and it's the reason why I'm still here. ”

~ Joel J. age 73

Pictured with Chris, Retention Team Manager



Dear Friends

Thank you for all of your support over the past year. We truly couldn't do our work without you! In this report we highlight the many successes in meeting our mission even in the face of skyrocketing rents for our clients on fixed incomes, and the increased demand for our service as the baby boomer generation ages.

The population of adults age 55 and over living in Multnomah County is growing, with marked increases in those living in tents and shelters. **Local homelessness counts show that older adults make up 25% of the homeless population.** Addressing this crisis will require more collaboration and coordination among service providers, housing providers, and government entities than ever before.

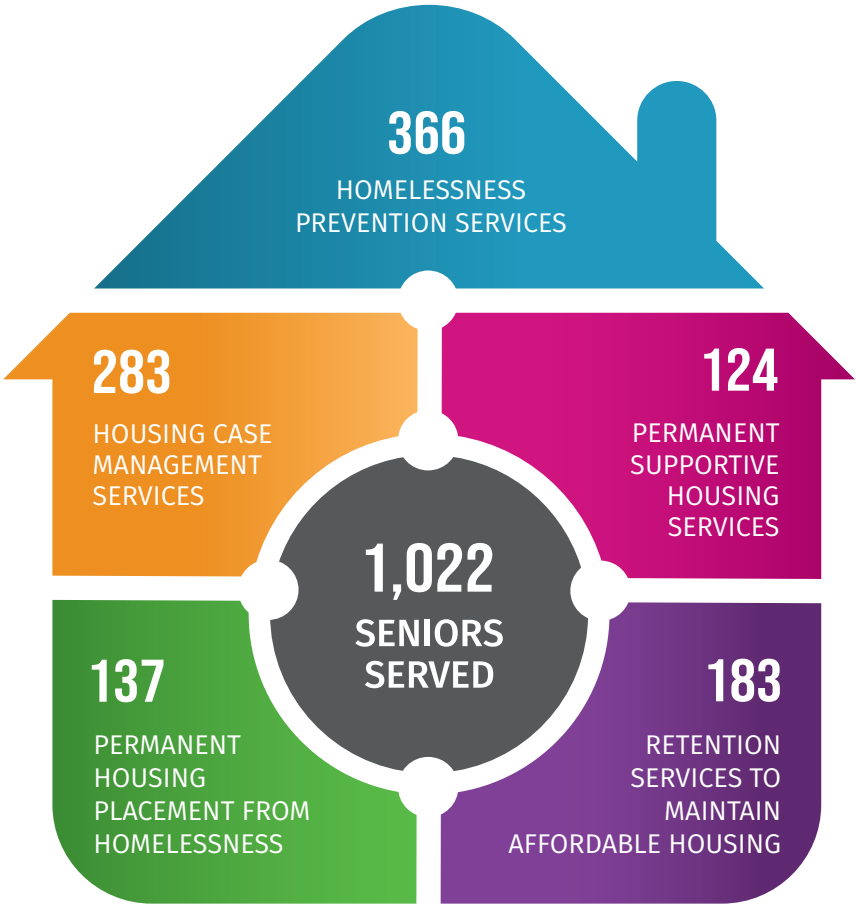
On page 4, we provide a summary of the amazing work NWPP has done over the last year. As we look forward to next year, we'll continue expanding our work in new areas. NWPP will be hosting its first housing forum on older adults and homelessness, and we'll be working with a team of health systems and service providers to create a healthcare case conferencing process for older adults with behavioral health issues.

We invite you to stay engaged or connect with us for the first time. Follow us on social media, sign up for our newsletter, make a donation. And look for us in November in the 2024 Willamette Week Give!Guide. Thank you for making NWPP successful in **Keeping Seniors Housed!**



Laura Golino de Lovato
Executive Director

This past year, NWPP assisted over 1,000 individuals with housing-related services.



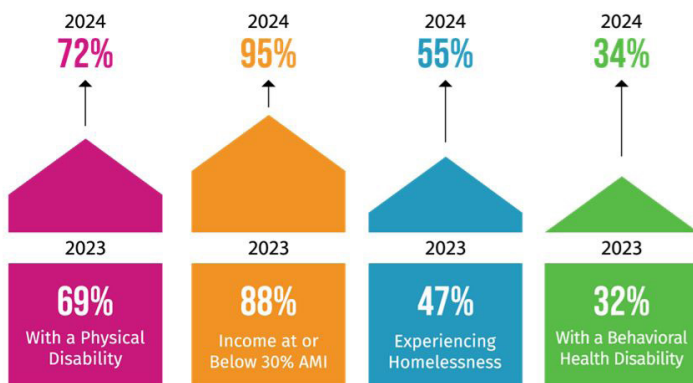
With a larger direct service staff, we have been able to expand our services this year: a range of housing assessments, information-sharing, short-term rent assistance, case management, transitional housing, permanent supportive housing, and housing retention support.

All our services are tailored to meet the unique circumstances of each older adult.

Our work over the past year has focused on three key areas:

- Evolving our Permanent Supportive Housing and Housing Retention programs,
- Working with health care systems to find a clear and easy way to help our client's access health care services,
- Addressing the crisis in in-home care support services.

More clients are facing more challenges each year



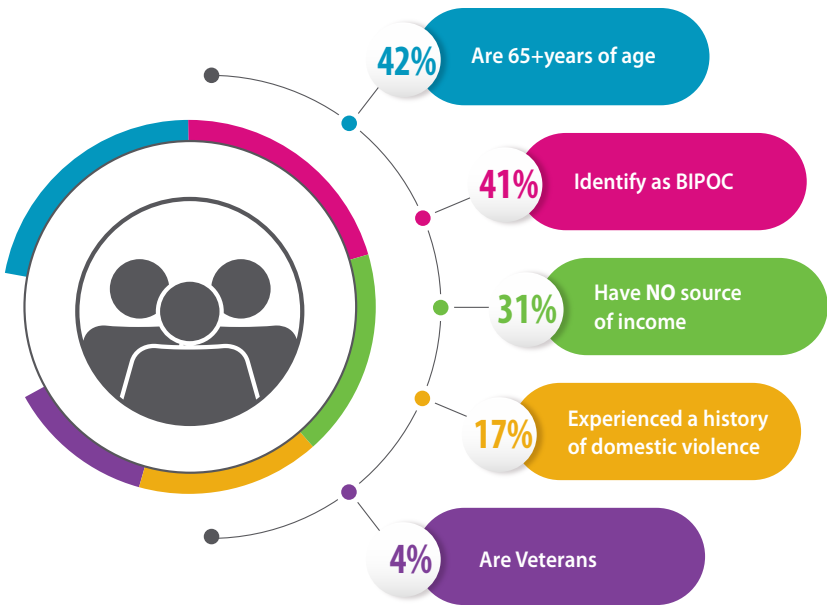
“ I feel truly supported
by my team at NWPP. . .
I feel like I could do more knowing
I had people in my corner.”

~Conrad, age 60



The many seniors we serve

Over the last ten years, NWPP has seen a **40 percent increase in clients age 62 or older**. And many of these seniors come from difficult circumstances. We're vigilant in adjusting how we deliver services to better meet the needs of older adults. Below, are some demographics of seniors we served last year.



Each month we continue to turn people away. Our organization alone cannot keep up with a senior population that is growing exponentially. We need more staff to serve more seniors, and we need more to be done to address the shortage of certain specialty services and resources in our community.

More affordable housing is key

But even with more specialty services, there must be affordable housing available for our clients. People living on fixed incomes simply cannot afford housing unless it is subsidized. The stock of subsidized housing and the shortage of rent assistance are insufficient to meet our current older adult population, much less the growing number who will face losing their housing because of rising rents.

The gap between typical NWPP clients' income and average studio rent in Portland Metro



*SSI Supplemental Security Insurance

**FMR Fair Market Rent

Source: Social Security Insurance (SSI) from Social Security Administration, Fair Market Rents (FMR) from HUD

According to the PSU Population Center, over the next 25 years the age 55+ population will increase almost 63%.

NWPP is driven by our mission to effectively serve as many older adults as we can. We will continue to advocate tirelessly for an increase in housing affordable for very low income older adults. And, while we work on that, we will share everything we know with anyone who wants to be a part of this effort. While there is a touch of magic in what we do, it is the hard work of moving forward step by step alongside our clients that results in our strong outcomes.

Over 90 percent of our clients remain stably housed 12 months after our assistance.

“When I’m not sure
what I need, my NWPP
Case Manager is
always there
to lend a hand.”

~ Becky, age 66



“ The online assessment tool has allowed us to be **more responsive** to the substantial increase in calls for assistance . . . It also **allows access** to a thorough housing assessment for people who might not meet NWPP’s demographic, but who desperately need housing help. ”

~ Jason Coulthurst, M.S.,
Housing Access Manager

Pictured here are our partners at Friendly House using our online housing assessment program.



Expanding access to affordable housing information

**Over 3,500 people have used the NWPP online
housing assessment program since 2018**

As an organization, we have always believed in sharing what we know, widely distributing our housing lists and inventories across Multnomah County for decades. In 2018, we developed the Online Housing Assessment that expands our reach beyond the capacity of our direct service staff. This is a tool that can be completed by anyone seeking more affordable housing, by a social worker, or by family or friends, and it's free.

Completing the online assessment is more useful than a general housing list. It narrows down the affordable housing options based on eligibility requirements, gives specifics on how to prepare an application with the required documents, offers guidance on overcoming screening barriers, and provides shelter and resource information specific to the answers provided by the household. Thousands of people have used NWPP's Online Housing Assessment over the past six years.

We encourage you to check out our NWPP Online Housing Assessment, and share it with those you know who are seeking housing. Find this tool on our website:

<http://assessment.nwpilotproject.org/#/login>

And once you've tried it out, let us know what you think:

<https://www.nwpilotproject.org/feedback/>

“ Northwest Pilot Project is a well-respected organization with **compassionate, dedicated staff**. They closely monitor the housing situation and needs of their many clients. Each client is treated with **dignity and respect** for their journey. ”

~ Carol Maresh,
longtime NWPP supporter



NWPP often supplies donated basic household goods when clients move into their new homes.

YOU can make a difference

Your support today is critical for ensuring that NWPP can continue to provide housing placement, eviction prevention, and retention services. Make a gift of any amount using the enclosed remittance envelope or online at **www.nwpilotproject.org**

You can also make a difference in our clients' lives by planning ahead. There are several ways you can help: make a gift to NWPP in your will; name NWPP as a beneficiary in your life insurance policy; or create a charitable gift annuity. Find out more! Contact Laura Golino de Lovato, Executive Director at 503-387-3909 or laurag@nwpilotproject.org

What your donation provides

\$25



one month of a needed prescription

\$75



application fee for an apartment

\$100



new bedding and kitchen kit for a senior newly placed in housing

\$500



rent assistance to prevent the eviction of a frail senior experiencing a housing crisis

\$1,000



application fees, deposits, moving costs for one permanent housing placement for a homeless senior

“Northwest Pilot Project was just
here for everything.
I came to them with just my backpack
and . . . kept me alive for two years
while I waited for disability.
NWPP means **friendship**.
Olivia provides care just like a friend.”

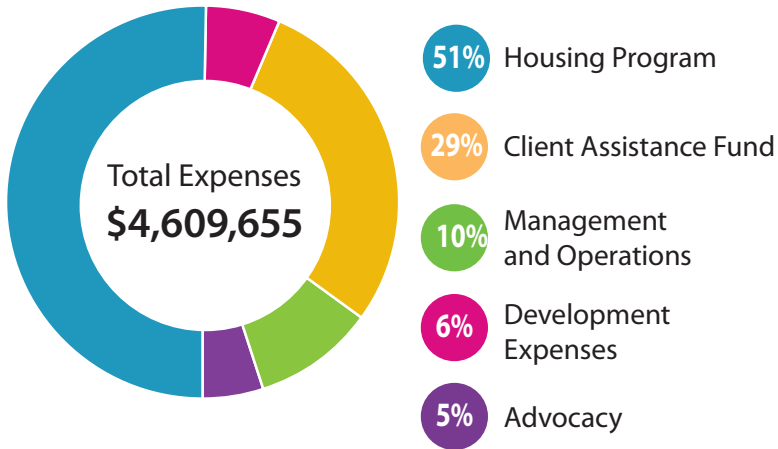
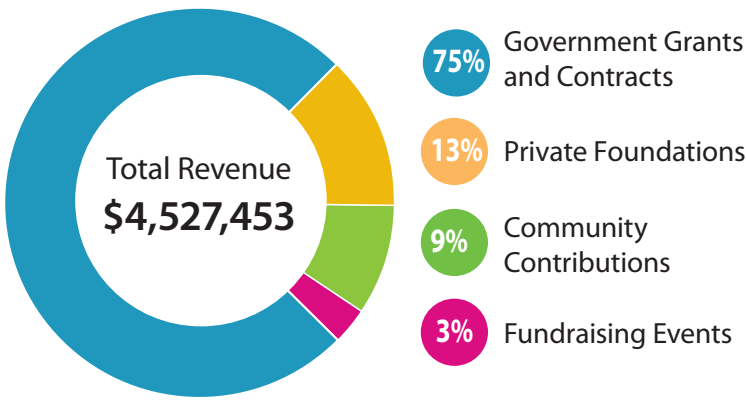
~Kevin, age 60

Pictured with Olivia, Support Services Specialist



Demonstrated Sound Fiscal Management

The financial information shown represents Northwest Pilot Project's financial overview for the fiscal year July 1, 2023 – June 30, 2024.



Full financial information available at nwpilotproject.org/financial-information/



**NORTHWEST
PILOT PROJECT**

1430 SW Broadway
Suite 200
Portland, OR 97201

HOUSING SENIORS
CREATING HOPE
PILOTING CHANGE

NWPP's mission: to offer opportunities for a life of dignity and hope to very low-income seniors in Multnomah County by solving housing needs.

Non-Profit Org.
U.S. Postage
PAID
Permit No. 1729
Portland, OR